

[TABLE OF CONTENTS](#) (Click to view)



**KINSLEY**  
MANUFACTURING  
STEEL FABRICATION & ERECTION



**STEEL FABRICATOR** [\(Click to view\)](#)

**STEEL ERECTOR** [\(Click to view\)](#)

**IN-HOUSE DETAILING** [\(Click to view\)](#)

**SAFETY** [\(Click to view\)](#)


**OFFICE LOCATION/AREAS OF OPERATION** [\(Click to view\)](#)

**DESIGN/BUILD** [\(Click to view\)](#)

**LEAN/SUSTAINABILITY** [\(Click to view\)](#)

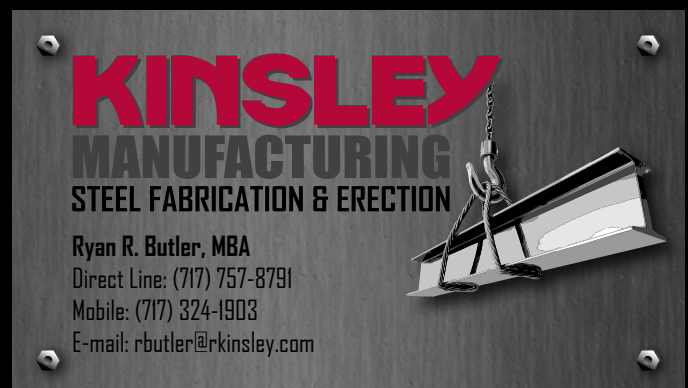
**MISSION STATEMENT** [\(Click to view\)](#)

To provide a safe and healthy workplace for our employees while offering our customers a full-service platform that is capable of satisfying their various needs as they relate to structural steel design, engineering, detailing, fabrication, erection, and retrofit of existing structural members in a sustainable manner and further acting in good faith as responsible stewards of the environment and their respective communities in which we operate and conduct business.




**KINSLEY**  
MANUFACTURING  
STEEL FABRICATION & ERECTION

**Bobby Chenault**  
Direct Line: (717) 757-8761  
Mobile: (717) 324-1906  
E-mail: [bchenault@rkinsley.com](mailto:bchenault@rkinsley.com)



**KINSLEY**  
MANUFACTURING  
STEEL FABRICATION & ERECTION

**Ryan R. Butler, MBA**  
Direct Line: (717) 757-8791  
Mobile: (717) 324-1903  
E-mail: [rbutler@rkinsley.com](mailto:rbutler@rkinsley.com)



## Why specify an American Institute of Steel Construction (AISC) Certified company?

- You get a company that is committed enough to quality to subject itself to an outside review.
- You get a company that has been reviewed by an evaluator who has been in literally hundreds of structural steel fabrication plants.
- You get a company that is familiar with quality systems and has dedicated the resources to provide quality work.



For more than 75 years, AISC has set the standard by which the steel industry is measured. An AISC Certified company has been placed through a rigorous examination to confirm that it has the personnel, organization, experience, procedures, knowledge, equipment, capability and commitment to produce work of the required quality.

Your success is contingent on the design, but also on the execution of the design. Make sure you have qualified professionals on your team.



## KINSLEY MANUFACTURING IS CERTIFIED BY AISC FOR THE FOLLOWING DESIGNATIONS:

### FABRICATORS

#### Standard for Steel Building Structures (STD)

The Certification Standard for Steel Building Structures applies uniformly to all building fabricators, regardless of size and complexity of project. AISC believes there is a basic level of quality that all fabricators need to maintain regardless of company size or shop capacity. The Building Standard places equal emphasis on all aspects of the fabricator's business processes.

#### Simple Steel Bridge Structures (SBR)

This category is appropriate for unspliced rolled beam bridges. Simple bridges can be short, single span highway overpasses. They are also pedestrian bridges, connections between buildings or bridges on private property. These projects may interface with contracts for state transportation departments.

#### Major Steel Bridge (CBR)

This certification is typically specified for bridges that have welded and bolted splices in multi-span projects. The projects include both rolled beams and built-up girders. Facilities should be capable of executing a typical three girder lay down and full assembly. The majority of these projects comply directly with state transportation departments' provisions. Companies certified for Major Steel Bridges (CBR) are also automatically certified for Simple Steel Bridges (SBR).

Companies in both bridge categories have a quality management system that supports fabrication practices necessary to meet the contract requirements for bridges - including a welding quality assurance system in accordance with AASHTO/AWS D1.5 - Bridge Welding Code.

### ENDORSEMENTS

#### Sophisticated Paint Endorsement

The Sophisticated Paint Endorsement is a quality certification program designed to evaluate the qualifications of structural steel fabricators and manufacturers of bridge and highway metal components who apply sophisticated or industrial protective coatings, such as zincs, epoxies, urethanes or multi-coat systems in their paint shops following fabrication. The Sophisticated Paint Endorsement meets quality program criteria requirements of SSPC-QP 3, "Standard Procedure for Evaluating the Qualifications of Shop Application Firms." Also, the Sophisticated Paint Endorsement is based on industry standards and manufacturers' storage, surface preparation, application and curing requirements.

- PI-Sophisticated Paint Endorsement-Enclosed

#### Fracture Critical Endorsement

Simple or major bridge fabricators that furnish fracture critical bridge members may qualify for the fracture critical endorsement. Fabricators must demonstrate a familiarity with procedures required to produce fracture critical members in accordance with a fracture control plan as defined by AASHTO/AWS D1.5.

### ERECTORS

#### Advanced Certified Steel Erector (ACSE)

Erection contractors providing services necessary for erection of structures such as large public and institutional buildings, heavy manufacturing plants, bunkers, bins, major bridges, continuous girder bridges, railroad bridges, powerhouses, major industrial facilities, locks and dams, high-rise structures, arenas and repair and rehabilitation of existing steel structures. The organization shall understand the procedures involved and have ready access to the requisite talent, resources and experience necessary to erect complex steel structures.

## KINSLEY MANUFACTURING – STEEL FABRICATION & ERECTION

## ► STEEL FABRICATOR

**Kinsley Manufacturing is an AISC Certified Steel Fabricator in the following:**

- Standard for Steel Building Structures (STD)
- Simple Steel Bridge Structures (SBR)
- Major Steel Bridge (CBR)

**With the following endorsements:**

- Sophisticated Paint
- P-I Sophisticated Paint Endorsement- Enclosed
- Fracture Critical

**Bonding capacity: \$100,000,000 single project/\$400,000,000 aggregate**

**Kinsley Manufacturing is an approved PennDOT Bulletin 15 Fabricator**

**The division owns and operates two full open-shop fabrication facilities with:**

- Approximately 282,300 square feet of fabrication space
- Large lay down areas for material storage
- 11 overhead cranes with lifting capacities up to 40 tons
- CNC Saw and Drill line that can handle up to a 54 inch wide flange jumbo beam
- Cambering machine with a maximum capacity of a 36x176 wide flange
- Plate Duplicator Drill (plasma and oxy fuel) capable of handling steel plate up to three inches thick
- Automatic Shot Blast Systems
- Two large fully equipped paint areas
- Fully-owned and operated trucking fleet allowing Kinsley to ship materials and finished goods directly to the end customer
- Rail access for shipping and receiving
- Capability of fabricating complex weldments
- Highly skilled and certified welders (SMAW and FCAW), fabricators and machine operators

**AT FULL CAPACITY, THE DIVISION IS CAPABLE OF PRODUCING 35,000 TONS ANNUALLY.**

To ensure that each job is carefully managed to ensure on time delivery of a quality product Kinsley Manufacturing employs a full-time support staff that includes the following: General and Assistant Division Managers, Accounting, Purchasing, Data Control, Project Mangers, Shop Foremen, Certified Weld Inspectors (CWI) and Detailers.

**KINSLEY MANUFACTURING – STEEL FABRICATION & ERECTION**

3900 E. Market Street, York, PA 17402 • Mailing Address: P.O. Box 2886, York, PA 17405 • P (717) 741-3841 • F (717) 757-8851 • [www.kinsleysteel.com](http://www.kinsleysteel.com)



► **STEEL ERECTOR**

**Kinsley Manufacturing is an AISC Advanced Certified Steel Erector (ACSE).**

**We are a full-service, open shop employing over 85 employees ranging from:**

- Certified Welders – SMAW and FCAW
- Iron Workers
- Qualified Riggers
- Crane Operators
- Project Managers

**Bonding capacity: \$100,000,000 single project/\$400,000,000 aggregate**

**With our full-service approach we are able to offer a wide range of steel erection services that include:**

- Conventional Steel Construction
- Pre-Engineered Building System Construction
- Complex Building Structures
- Girder Slab Construction
- Tilt-Up Wall Panel
- Pre-Cast Wall Panel
- Hollow-Core Plank
- Shear Stud Installation
- Metal Deck Installation
- Crane Services:
  - All our operators are NCCCO (National Certified Crane Operators)
  - Certified Tower Crane Operators
  - Crane operators licensed by the States of New York and West Virginia
  - Cranes are fully owned and operated with sizes ranging from:
    - 40-90 USt Hydraulic Cranes
    - 120-275 USt Crawler Cranes

**KINSLEY MANUFACTURING – STEEL FABRICATION & ERECTION**

**STEEL FABRICATOR** (Click to view)

**STEEL ERECTOR** (Click to view)

► **IN-HOUSE DETAILING**

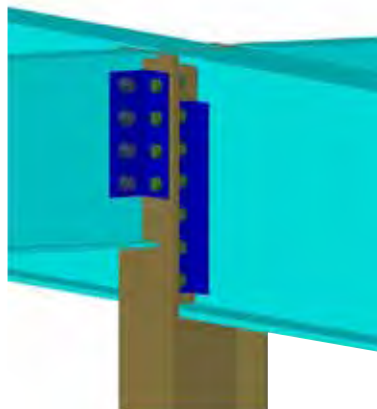
Kinsley Manufacturing employs a full detailing staff to work closely with the project team to create shop drawings. They will be used for any fabrication and erection drawings utilized by the erection crews to install the final product.

**Our detailing department conforms to:**

- AISC (American Institute of Steel Construction)
- AWS (American Welding Society)

**Our detailer's software:**

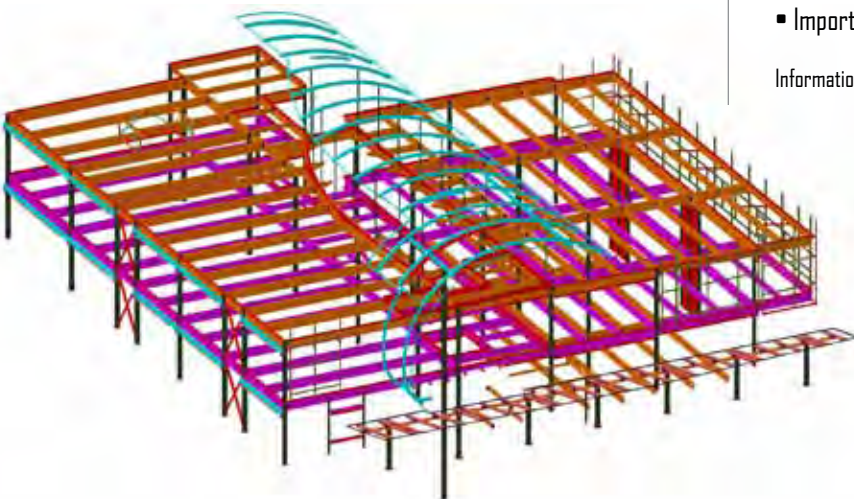
- Tekla
- Pro-Steel
- Auto CADD



Tekla Structures, Steel Detailing is a standard configuration enhanced with relevant steel detailing functionality. Users can create detailed 3D models of any steel material and then generate corresponding fabrication and erection information shared by all project participants.

- View Tekla Structures models (all materials and profiles)
- Create and modify grids
- Model parts and bolts (regardless of building material)
- Create welds
- Add loads to a model
- Create assemblies of steel parts
- Create levels of assembly hierarchy
- Create detailed steel connections
- Create automatic preset connections to multiple parts
- Create erection sequences
- View model information in 4D (simulated schedule)
- Work simultaneously on the same model with several users
- Interface with other tools and disciplines
- Publish models to be viewed on the Internet
- Exchange data (CIS/2 format, MIS systems)
- Export CNC, DSTV
- Import external/export data via links (FEM, SDNF, XML)
- Import and export data via IFC 2x2, 2x3 and Tekla Open API™
- Interface with Analysis and Design software for data exchange
- Import and export graphic 2D and 3D data (DXF, DGN, DWG)

Information from [www.tekla.com](http://www.tekla.com)



**KINSLEY MANUFACTURING – STEEL FABRICATION & ERECTION**

**STEEL FABRICATOR** [\(Click to view\)](#)

**STEEL ERECTOR** [\(Click to view\)](#)

**IN-HOUSE DETAILING** [\(Click to view\)](#)

► **SAFETY**

**SAFETY IS ESSENTIAL TO THE SUCCESS OF A PROJECT.**

Kinsley Manufacturing has the resources of a fully staffed Safety Department to ensure that our employees have the knowledge, tools and resources to complete every project in the safest manner possible. The Safety Department develops policies and procedures that hold employees of Kinsley Manufacturing to the highest standards of safety and health. The safety policy at Kinsley Manufacturing complies with the most stringent industry practices, including one hundred percent fall protection, near miss reporting and investigation, and a drug and alcohol free workplace.

All employees receive extensive training and education in-house through the Kinsley Education Center. Every employee of Kinsley Manufacturing attends an OSHA 10-Hour Construction Safety and Health course, and an additional day of steel erection safety. Supervisors also attend the OSHA 30-hour course. Training and education is a constant, on-going effort at Kinsley. Other classes include First Aid and CPR, rigging and signaling,

heavy equipment certification, incident investigation and many others. We even start each work week with a supervisor's safety meeting.

Additionally, each project starts with a Site Specific Safety and Erection Plan. The plan addresses all phases of the project from mobilization, to erection procedures and sequence, to the type of fall protection systems to be utilized. The plan is developed by the Project Manager and reviewed and approved by the Safety Department. A Pre-Erection Meeting is held with the project team to review the plan and ensure a smooth startup and efficient project delivery. Projects are also inspected on a regular basis by members of the Safety Department to ensure safe working conditions for our employees, other contractors around our work areas, and the public.

By actively planning for safety using only highly qualified and trained employees and holding our employees to the most stringent safety standards we can deliver a project that meets our goal – zero accidents.



**KINSLEY MANUFACTURING – STEEL FABRICATION & ERECTION**

3900 E. Market Street, York, PA 17402 • Mailing Address: P.O. Box 2886, York, PA 17405 • P (717) 741-3841 • F (717) 757-8851 • [www.kinsleysteel.com](http://www.kinsleysteel.com)

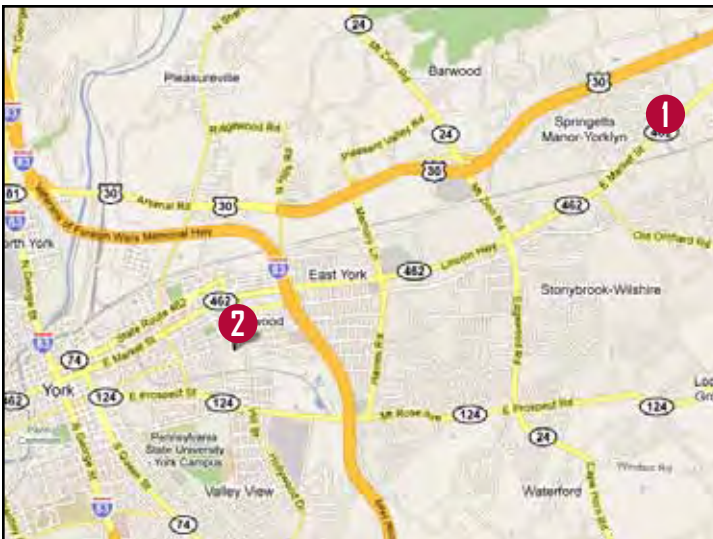
**STEEL FABRICATOR** (Click to view)

**STEEL ERECTOR** (Click to view)

**IN-HOUSE DETAILING** (Click to view)

**SAFETY** (Click to view)

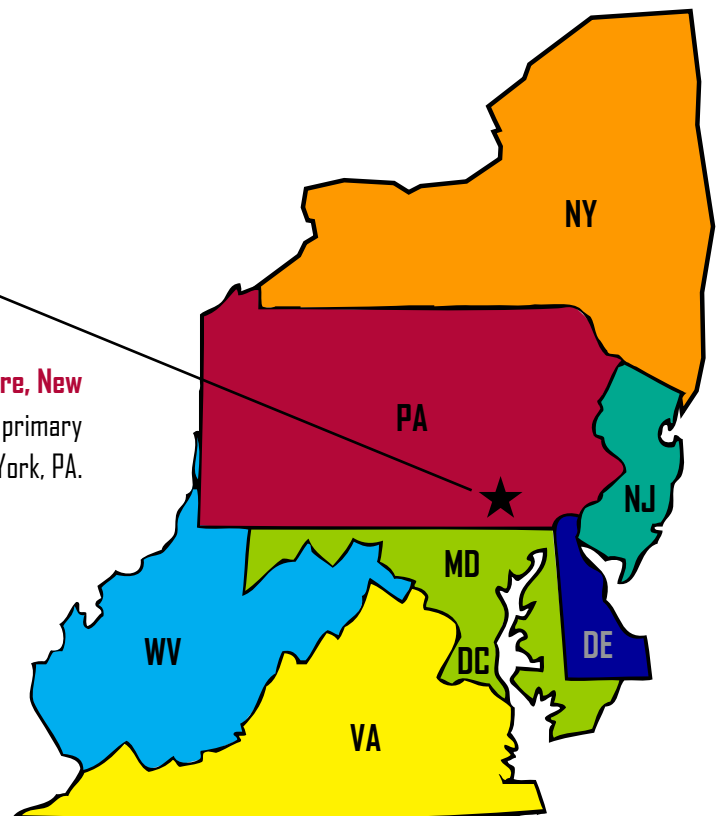
► **OFFICE LOCATION/AREAS OF OPERATION**



**1 Main Office and East Market Street Fabrication Facility**  
3900 East Market Street – York, PA 17402

**2 East Princess Street Fabrication Facility**  
1110 East Princess Street – York, PA 17405

Kinsley Manufacturing is licensed in **Pennsylvania, Maryland, Delaware, New Jersey, New York, West Virginia, Virginia and Washington DC**. Our primary service offerings focus within a five-hour radius of York, PA.



# KINSLEY MANUFACTURING – STEEL FABRICATION & ERECTION

**STEEL FABRICATOR** [\(Click to view\)](#)


**STEEL ERECTOR** [\(Click to view\)](#)

**IN-HOUSE DETAILING** [\(Click to view\)](#)

**SAFETY** [\(Click to view\)](#)

**OFFICE LOCATION/AREAS OF OPERATION** [\(Click to view\)](#)

► **DESIGN/BUILD**



The makeup of the team that will be assisting in the design/build process is one of the most important success factors for a project of this type. You want team members that not only understand the benefits of design/build, but more importantly understand how to mitigate the inherent risks in the process.



Kinsley Manufacturing is the team member that fully understands all aspects of the design/build process as they relate to the design and integration of structural steel into the overall project. With our full-service capabilities, we are able to proficiently evaluate the steel from the initial building design conception to budgeting and value engineering to schedule duration and trade integration. This is an install process in its entirety to ensure the benefits of design/build are fully exploiting while mitigating the exposure for risk.

Kinsley Manufacturing has successfully completed structural steel design/build contracts up to thirty million dollars.

# KINSLEY MANUFACTURING – STEEL FABRICATION & ERECTION

**STEEL FABRICATOR** [\(Click to view\)](#)

**STEEL ERECTOR** [\(Click to view\)](#)

**IN-HOUSE DETAILING** [\(Click to view\)](#)

**SAFETY** [\(Click to view\)](#)

**OFFICE LOCATION/AREAS OF OPERATION** [\(Click to view\)](#)

**DESIGN/BUILD** [\(Click to view\)](#)

▶ **LEAN/SUSTAINABILITY**

Kinsley Manufacturing strives to ensure that both our steel fabrication and steel erection processes and practices are not only lean, but also achieve a high level of sustainability.

We understand that by implementing and continually maintaining lean processes and procedures that we are able to achieve a safer organization, improved quality of our products and services, and cost reductions, which ultimately transform into a superior product for our clients.

We further understand that becoming lean does not completely address the issue of sustainability. Our focus on sustainability ensures that as a company we are acting as responsible stewards of the communities in which we work and operate. We operate two state-of-the-art steel fabrication facilities with advanced automated and CNC processes, advanced exhaust filtration systems and rail accessibility for shipping and receiving.



**Ultimately, our goal is to continue to reduce our environmental impact by better use of modern technology and other state-of-the-art and/or innovative processes, procedures and materials.**



# KINSLEY MANUFACTURING – STEEL FABRICATION & ERECTION

**STEEL FABRICATOR** [\(Click to view\)](#)

**STEEL ERECTOR** [\(Click to view\)](#)

**IN-HOUSE DETAILING** [\(Click to view\)](#)

**SAFETY** [\(Click to view\)](#)

**OFFICE LOCATION/AREAS OF OPERATION** [\(Click to view\)](#)

**DESIGN/BUILD** [\(Click to view\)](#)

**LEAN/SUSTAINABILITY** [\(Click to view\)](#)

► **MISSION STATEMENT**

To provide a safe and healthy workplace for our employees while offering our customers a full-service platform that is capable of satisfying their various needs as they relate to structural steel design, engineering, detailing, fabrication, erection, and retrofit of existing structural members in a sustainable manner and further acting in good faith as responsible stewards of the environment and their respective communities in which we operate and conduct business.



# KINSLEY MANUFACTURING – STEEL FABRICATION & ERECTION

[TABLE OF CONTENTS](#) (Click to view)

# KINSLEY MANUFACTURING – STEEL FABRICATION & ERECTION

Office/Shop Location:

3900 E. Market Street, York, PA 17402

Mailing Address: P.O. Box 2886, York, PA 17405

Phone (717) 741-3841

Fax (717) 757-8851

[www.kinsleysteel.com](http://www.kinsleysteel.com)

